

WU Series 16x9 Ratio

ATS-PRO **MODULAR** INDOOR HD DIRECT VIEW LED WALLS

ATS
PRO™

Taylorleds

2021 ATS-PRO WU SERIES MODULAR INDOOR LED MADE FOR ATS-PRO BY **Taylorleds**

ATS
PRO™

2021 ATS-PRO WU SERIES MODULAR INDOOR LED

State of the Art Direct View LED

The finest built Direct View LED Wall Systems

Taylorleds is an innovative, integrity minded joint-venture focused on providing State of the Art LED products. Absen owns 80% of Taylorleds and manufactures most of Taylorleds LED Display products while Design, R&D and QC are handled by Taylorleds. Absen is a public-listed Chinese LED Display manufacturer.

For more than 15 years the staff at ATS-Professional has designed and built some of the most iconic indoor LED systems throughout the world with Pixel ranges from .83mm to 4mm in all sorts of sizes and shapes.

ATS-Professional is a direct designer and importer of OEM LED Panel designs. Our LED products are manufactured for ATS by some of the largest LED factories in the world.

We choose OEM factories based on the requirements of the project and each factory's unique capabilities to provide the finest solution for our customers based on our Engineering Build Requirements and Design.

With decades of experience dealing in OEM manufacturing and our Un-matched internal Design and Engineering, ATS-Professional introduces our newest and most advanced line of indoor LED systems.

Every facet of the Design has been meticulously thought out. Mechanical Design, Visual Electronics, Installation, Reliability, Service and Support, Multiple Resolutions and Media Playback Systems to fit any budget.



2021 ATS-PRO WU SERIES MODULAR INDOOR LED MADE FOR ATS-PRO BY:

Taylorleds



Advanced Features

Fine pitch 16:9 LED panels for ultimate viewing experience



Ultra Slim Profile



Cableless



Wall Mounting/
Hanging/Stacking



6-axis Alignment



16:9 Aspect Ratio



Dual Power and
Signal Available

Taylorleds Advanced Features

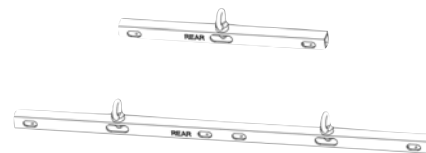
Floor Stack

Specifically designed and affordable Floor Stack for WU panels. Cross bar option to lift rows off of the floor for better viewing while on stage.



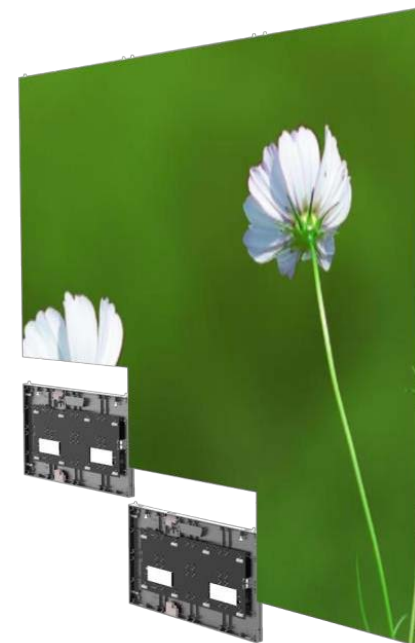
Hanging Bracket

Specifically designed for WU Panels in 610mm and 1220mm wide options. Allows for 10 high panels high (16.4') and any wall width.



Wall Mount

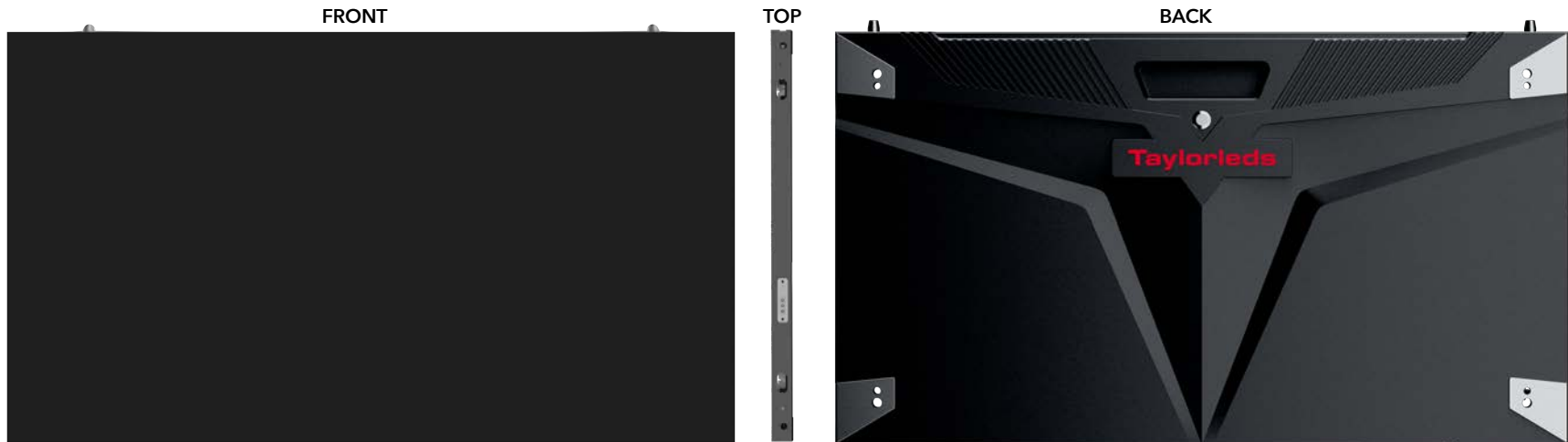
Specifically designed wall mount system for WU panels. Brackets are modular designed and easily connect together.



2021 ATS-PRO WU SERIES MODULAR INDOOR LED MADE FOR ATS-PRO BY: **Taylorleds**

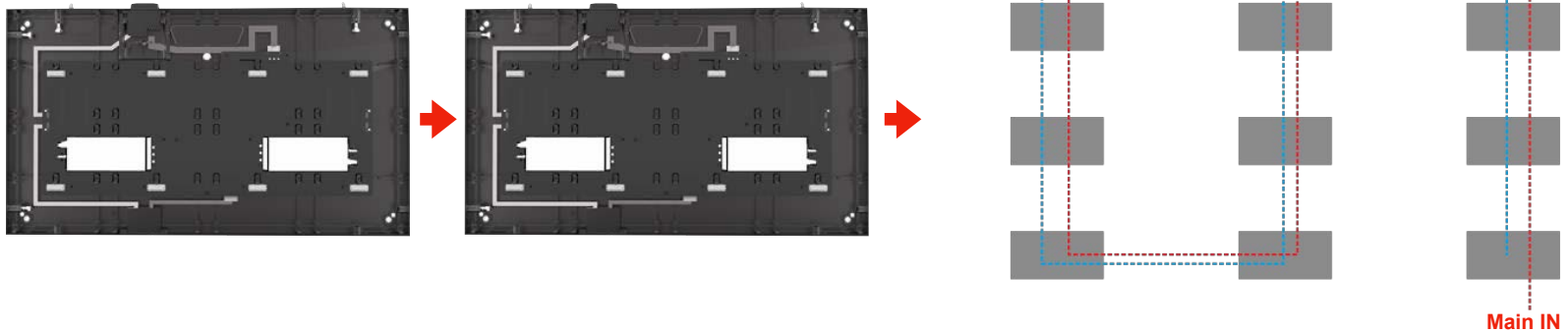


Advanced Features continued



Dual Power and Signal Option

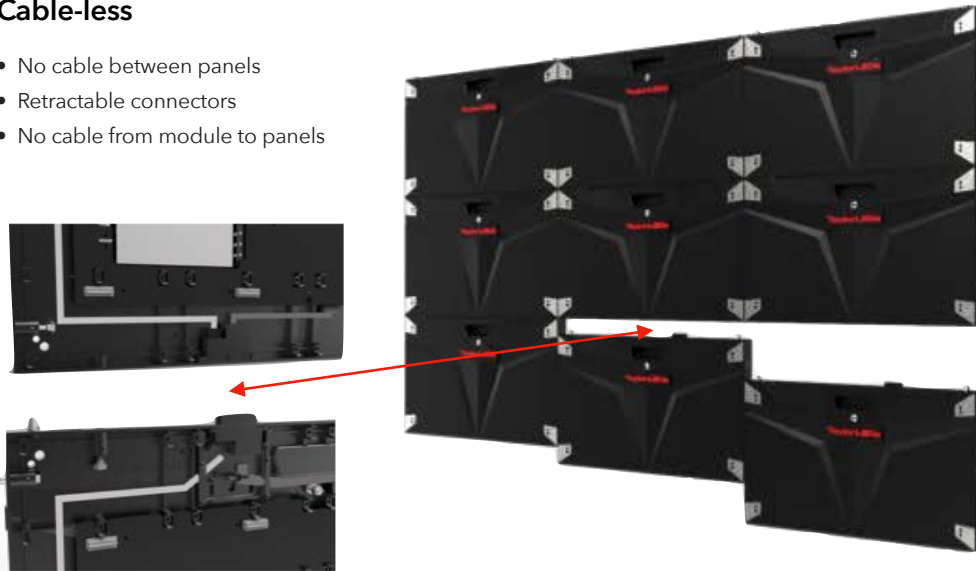
- A backup PSU and receiver card can be installed
- Backup option for better stability



Advanced Features continued

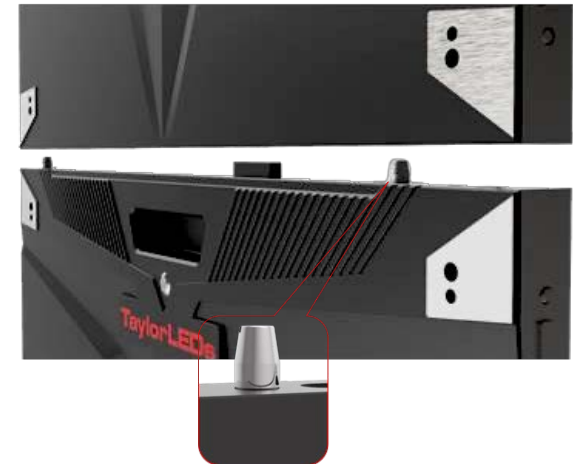
Cable-less

- No cable between panels
- Retractable connectors
- No cable from module to panels



Alignment Anchors for Perfect Flatness

- Two alignment pins on top
- Three alignment anchors on the side



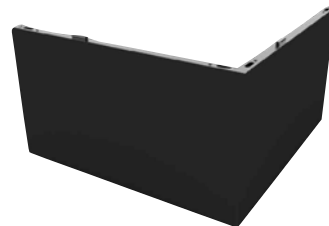
100% Front Serviceability

- Vacuum tool for modules
- Hubs and PSUs accessible from the front



90° Optional Corners

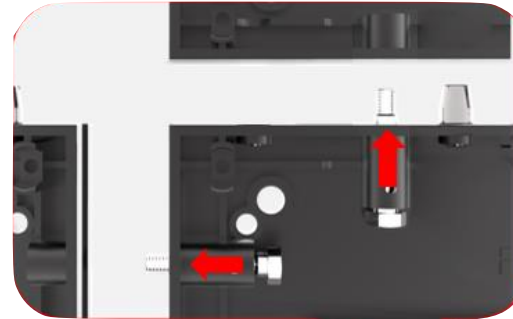
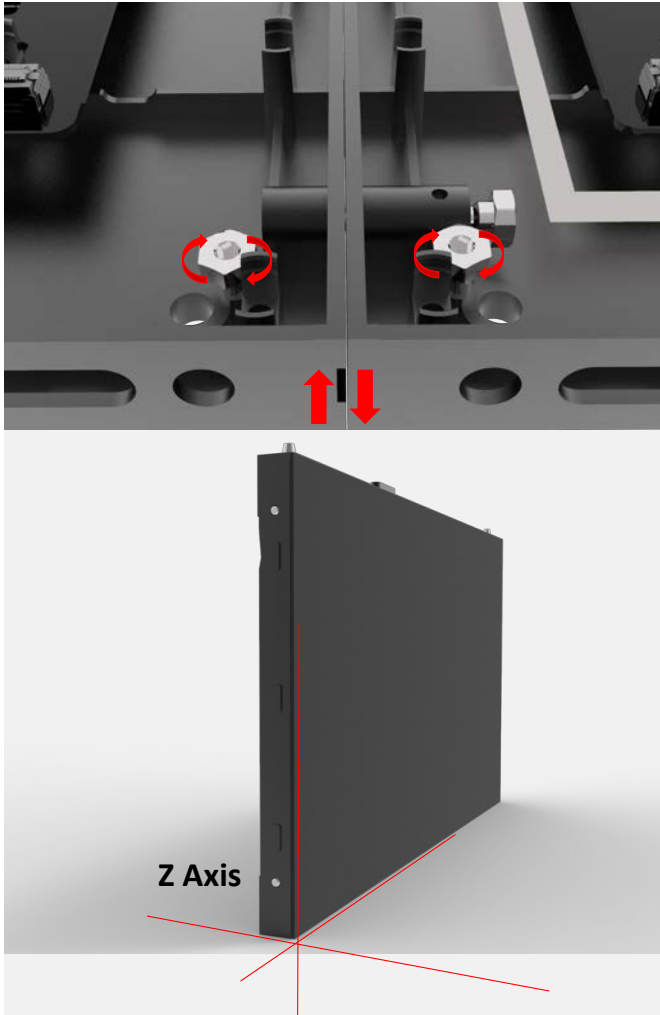
- 90° panels available to create corner screens to wrap walls and columns



Advanced Features continued

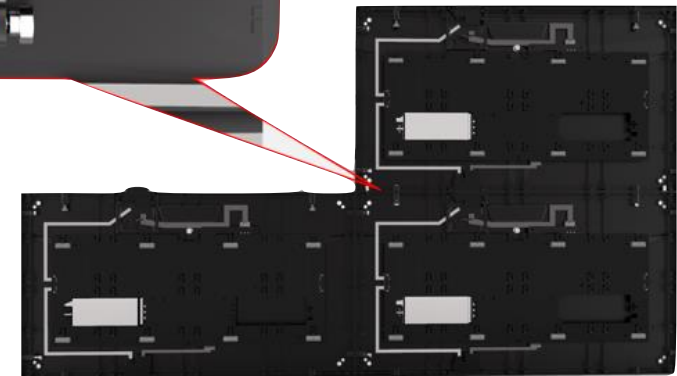
Z Axis Adjustment

- Four screws per panel to adjust for uneven walls



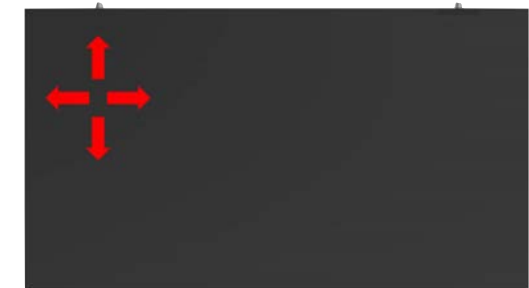
All Captive Screws

- Two screws on top
- Two screws on the side



Micro Module Adjustment

- Modules can be adjusted within 0.55mm
- Seamless screen





3840 X 2160 LAYOUT MATRIX



	0.95						1.2		1.58		1.9		2,54			
	1	2	3	4	5	6	7	8	9	10	11	12	13	14	15	16
1	0.95	0.95	0.95	0.95	0.95	0.95	1.2	1.2	1.58	1.58	1.9	1.9	2,54	2,54	2,54	2,54
2	0.95	0.95	0.95	0.95	0.95	0.95	1.2	1.2	1.58	1.58	1.9	1.9	2,54	2,54	2,54	2,54
3	0.95	0.95	0.95	0.95	0.95	0.95	1.2	1.2	1.58	1.58	1.9	1.9	2,54	2,54	2,54	2,54
4	0.95	0.95	0.95	0.95	0.95	0.95	1.2	1.2	1.58	1.58	1.9	1.9	2,54	2,54	2,54	2,54
5	0.95	0.95	0.95	0.95	0.95	0.95	1.2	1.2	1.58	1.58	1.9	1.9	2,54	2,54	2,54	2,54
6	0.95	0.95	0.95	0.95	0.95	0.95	1.2	1.2	1.58	1.58	1.9	1.9	2,54	2,54	2,54	2,54
7	1.2	1.2	1.2	1.2	1.2	1.2	1.2	1.2	1.58	1.58	1.9	1.9	2,54	2,54	2,54	2,54
8	1.2	1.2	1.2	1.2	1.2	1.2	1.2	1.2	1.58	1.58	1.9	1.9	2,54	2,54	2,54	2,54
9	1.2	1.2	1.2	1.2	1.2	1.2	1.2	1.2	1.58	1.58	1.9	1.9	2,54	2,54	2,54	2,54
10	1.2	1.2	1.2	1.2	1.2	1.2	1.2	1.2	1.58	1.58	1.9	1.9	2,54	2,54	2,54	2,54
11	1.9	1.9	1.9	1.9	1.9	1.9	1.9	1.9	1.9	1.9	1.9	1.9	2,54	2,54	2,54	2,54
12	1.9	1.9	1.9	1.9	1.9	1.9	1.9	1.9	1.9	1.9	1.9	1.9	2,54	2,54	2,54	2,54
13	2,54	2,54	2,54	2,54	2,54	2,54	2,54	2,54	2,54	2,54	2,54	2,54	2,54	2,54	2,54	2,54
14	2,54	2,54	2,54	2,54	2,54	2,54	2,54	2,54	2,54	2,54	2,54	2,54	2,54	2,54	2,54	2,54
15	2,54	2,54	2,54	2,54	2,54	2,54	2,54	2,54	2,54	2,54	2,54	2,54	2,54	2,54	2,54	2,54
16	2,54	2,54	2,54	2,54	2,54	2,54	2,54	2,54	2,54	2,54	2,54	2,54	2,54	2,54	2,54	2,54





1920 X 1080 LAYOUT MATRIX



	0.95			1.2	1.58	1.9	2.54									
	1	2	3	4	5	6	7	8	9	10	11	12	13	14	15	16
1	0.95	0.95	0.95	1.2	1.58	1.9	2.54	2.54								
2	0.95	0.95	0.95	1.2	1.58	1.9	2.54	2.54								
3	0.95	0.95	0.95	1.2	1.58	1.9	2.54	2.54								
4	1.2	1.2	1.2	1.2	1.58	1.9	2.54	2.54								
5	1.58	1.58	1.58	1.58	1.58	1.9	2.54	2.54								
6	1.9	1.9	1.9	1.9	1.9	1.9	2.54	2.54								
7	2.54	2.54	2.54	2.54	2.54	2.54	2.54	2.54								
8	2.54	2.54	2.54	2.54	2.54	2.54	2.54	2.54								
9																
10																
11																
12																
13																
14																
15																
16																



Specifications

2021 ATS-PRO WU SERIES MODULAR INDOOR LED



Specifications	WU 0.9 COB	WU 1.2 COB	WU 1.2	WU 1.5	WU 1.9	WU 2.5
LED Type	COB	COB	SMD 3 in 1 1010	SMD 3 in 1 1010	SMD 3 in 1 1515	SMD 3 in 1 2121
Pixel Pitch (mm)	0.95	1.27	1.27	1.58	1.9	2.54
Panel Dimensions (W*H*D)/(mm)	610×343×44	610×343×44	610×343×34	610×343×34	610×343×34	610×343×34
Panel Weight (kg)	6.5	6.5	4.8	4.8	4.8	4.8
Pixel Per Panel (w, h)	640 * 360	480 * 270	480 * 270	384 * 216	320*180	240*135
Panel Material	Die Casting Aluminum	Die Casting Aluminum	Die Casting Aluminum	Die Casting Aluminum	Die Casting Aluminum	Die Casting Aluminum
Module Dimensions (W*H)/(mm)	152.5×343	152.5×343	152.5×343	152.5×343	152.5×343	152.5×343
Brightness (nit)	600	600	600	600	800	1000
Refresh Rate (Hz)	3840	3840	1920/3840	1920/3840	1920/3840	1920/3840
Gray scale (bit)	14	14	13 Bit/14 Bit	13 Bit/14 Bit	13 Bit/14 Bit	13 Bit/14 Bit
Contrast Ratio	15000:1	15000:1	3000:1	4000:1	4000:1	4000:1
Color Temperature (K)	9000	9000	6500	6500	6500	6500
Viewing Angle (H/V) (°)	160/160	160/160	160/140	160/140	160/140	160/140
AC Operating Voltage (V)	100~240	100~240	100~240	100~240	100~240	100~240
Power Consumption Max./Avg.) (W/m ²)	620/207	540/180	630/210	610/203	540/180	610/203
Storage Temperature (°C)	-40~ +60	-40~ +60	-40~ +60	-40~ +60	-40~ +60	-40~ +60
Operating Temperature (°C)	-10~ +40	-10~ +40	-10~ +40	-10~ +40	-10~ +40	-10~ +40
IP Rating (Front/Rear)	IP40/IP21	IP40/IP21	IP40/IP21	IP40/IP21	IP40/IP21	IP40/IP21
LED Lifetime (H)	100000	100000	100000	100000	100000	100000
Module Maintenance	Front	Front	Front	Front	Front	Front
PSU & Others Maintenance	Front	Front	Front	Front	Front	Front
Panel Installation Type	Wall / Stacking / Hanging	Wall / Stacking / Hanging	Wall / Stacking / Hanging	Wall / Stacking / Hanging	Wall / Stacking / Hanging	Wall / Stacking / Hanging
Maximum Rigging QTY	10	10	10	10	10	10
Certification	UL/CE/ FCC	UL/CE/ FCC	UL/CE/ FCC	UL/CE/ FCC	UL/CE/ FCC	UL/CE/ FCC

Specifications subject to change. Please contact ATS-Pro for updated Specifications

